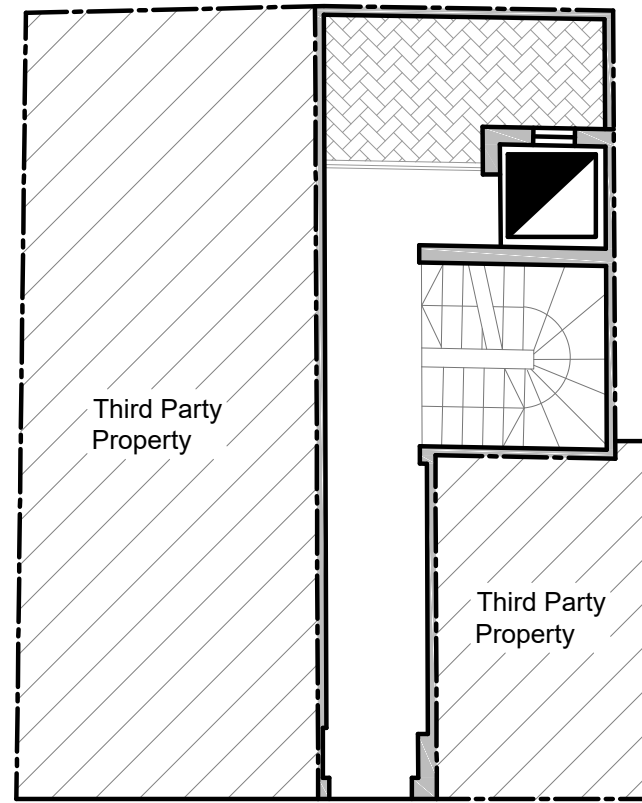
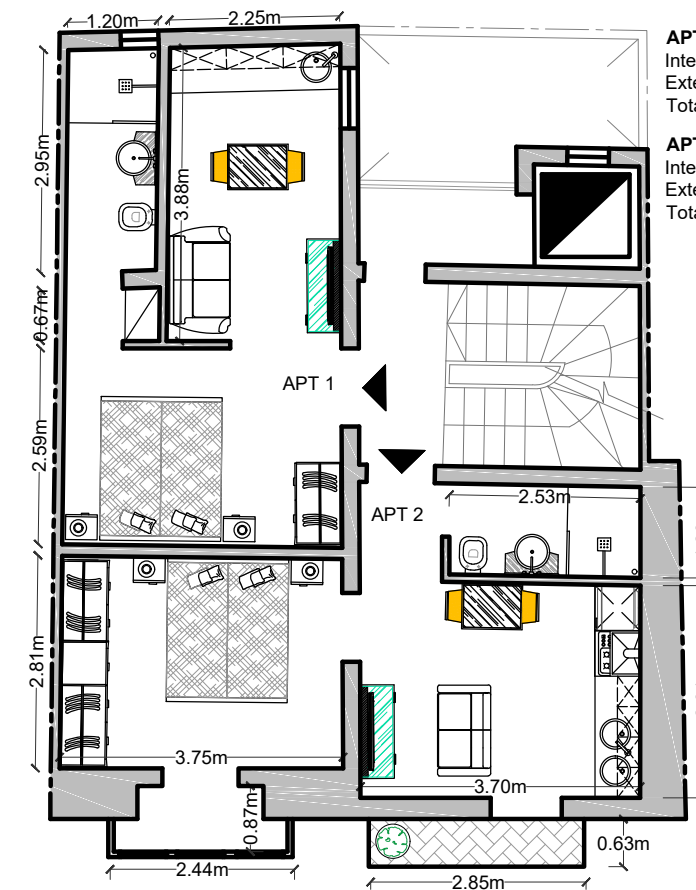


Basement Floor
1:100



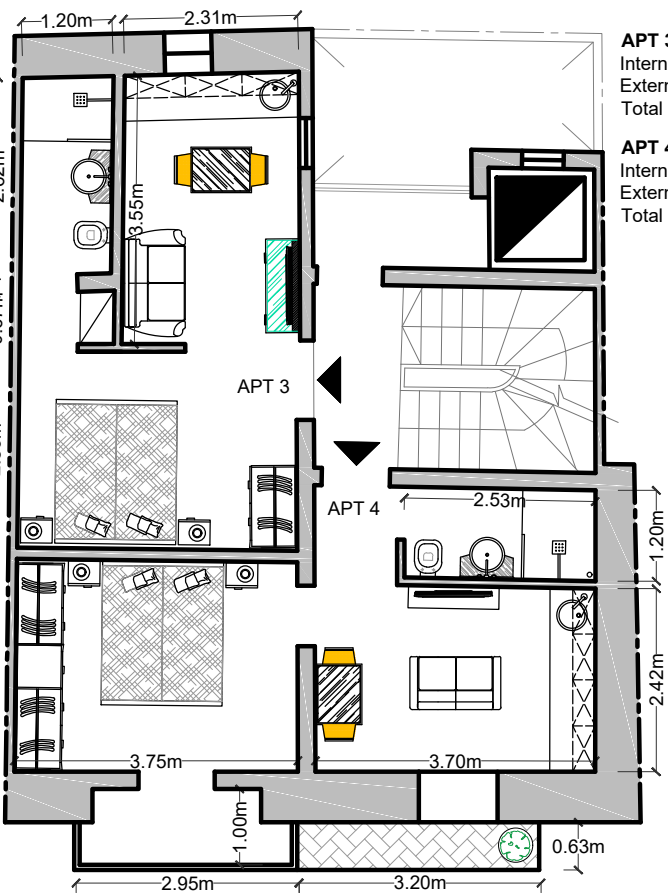
Ground Floor
1:100



Second Floor
1:100

APT 1
Internal area: 26.7m²
External area: -
Total area: 26.7m²

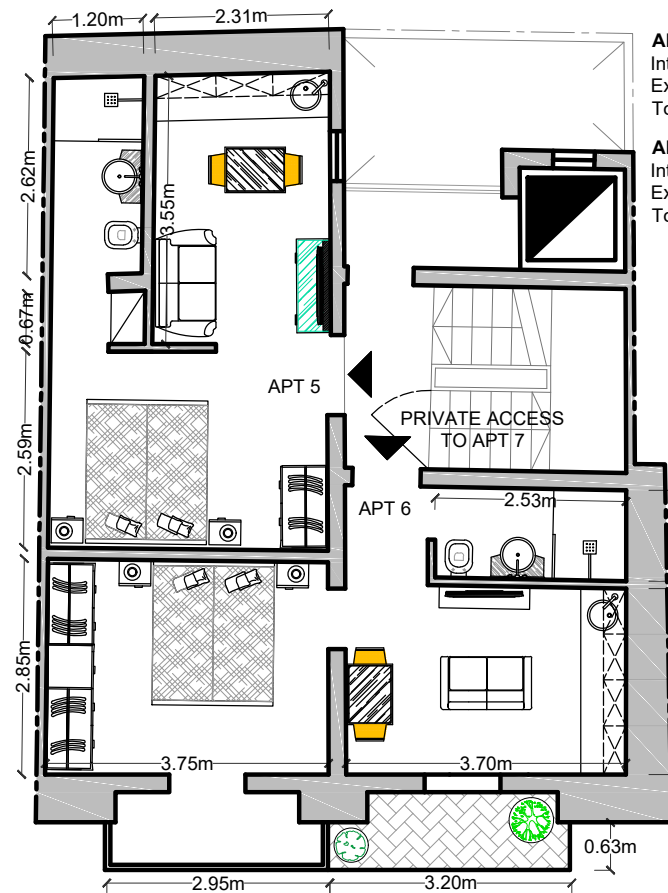
APT 2
Internal area: 35.1m²
External area: 1.79m²
Total area: 36.89m²



Third Floor
1:100

APT 3
Internal area: 26.9m²
External area: -
Total area: 26.9m²

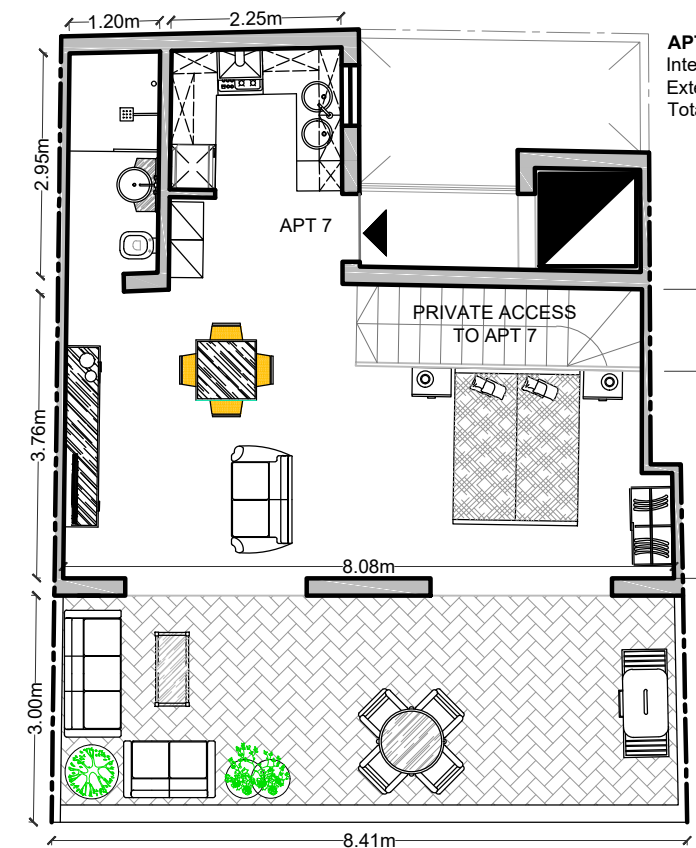
APT 4
Internal area: 35.7m²
External area: 2.01m²
Total area: 37.71m²



Fourth Floor
1:100

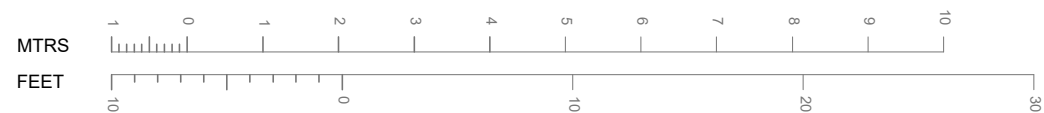
APT 5
Internal area: 26.9m²
External area: -
Total area: 26.9m²

APT 6
Internal area: 34.7m²
External area: 3.02m²
Total area: 37.72m²



Fifth Floor
1:100

APT 7
Internal area: 46.1m²
External area: 25.06m²
Total area: 71.16m²



SCALE 1:100

NOTES:

CLIENT:	FLORIANA
LOCATION:	FLORIANA
DATE:	21.07.22
DRAWN BY:	CC
SCALE:	1:100

PROJECTION DESCRIPTION:

**FLORIANA
BLOCK OF 7 SERVICED APARTMENTS**

PROPOSED FURNITURE LAYOUT

JOB NO:
DRAWING NO:

**22.21
A03**