



Proposed GROUND FLOOR PLAN

Duplex maisonette no 5

Internal area 96sq.m at ground floor + 89sq.m at first floor = 194sq.m  
external area = 5sq.m

Apartment no 1

Internal area 143sq.m



One Stone spiral staircase to be carefully dismantled re integrated in the proposed development



**PROPOSED FIRST FLOOR PLAN**

Duplex maisonette no 5  
 Internal area 96sq.m at ground floor + 89sq.m at first floor =194sq.m  
 external area = 5sq.m

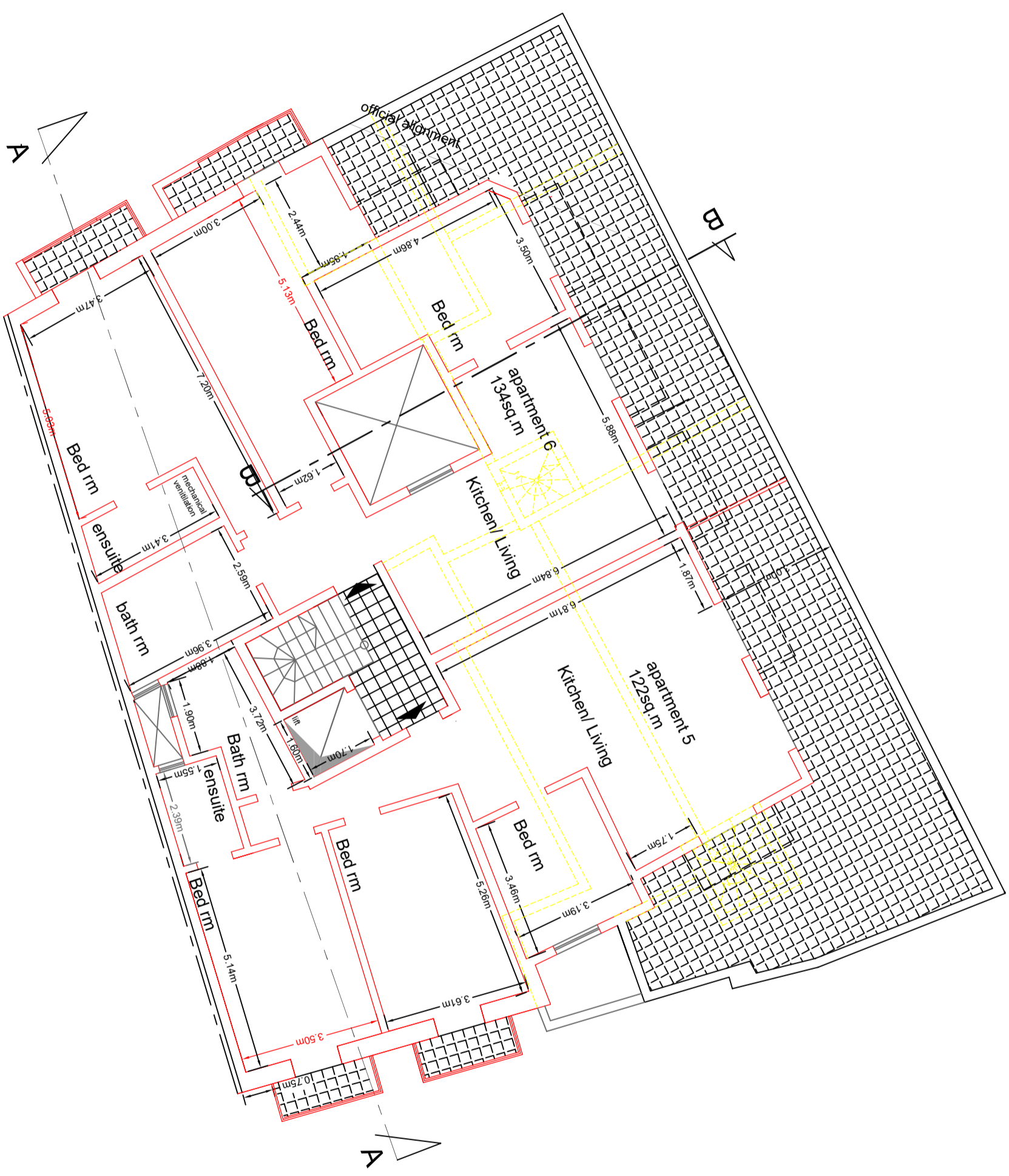
Apartment no 2  
 Internal area 128sq.m external area = 7.66sq.m

Apartment no 3  
 Internal area 89.4 sq.m external area = 4.3sq.m

Apartment no 4  
 Internal area 50.1 sq.m external area = 6sq.m

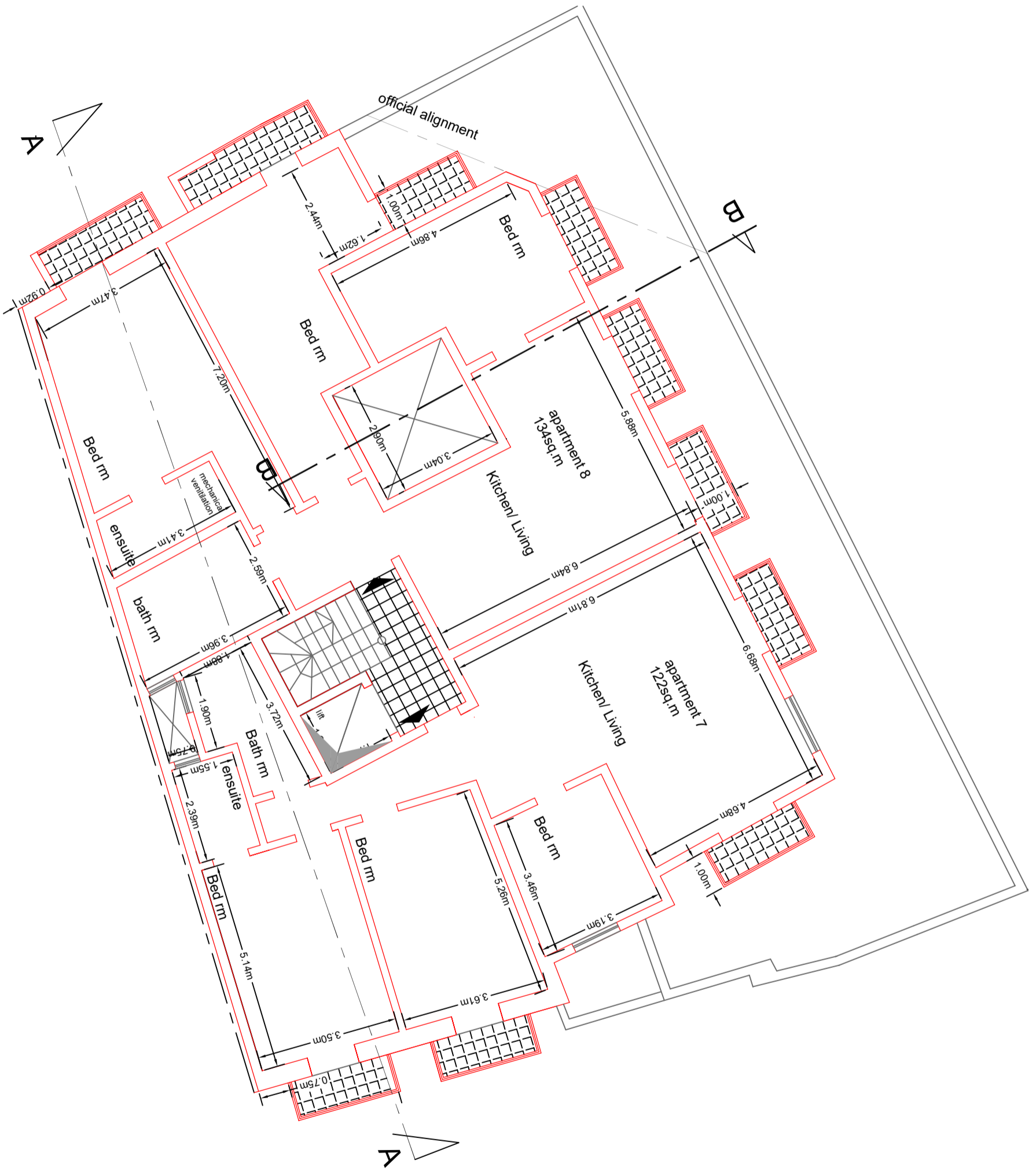


One stone spiral staircase to be carefully dismantled re integrated in the proposed development



Proposed Second Floor Level

- Apartment no 5  
Internal area 122 sq.m external area = 58sq.m
- Apartment no 6  
Internal area 134sq.m external area = 54q.m



**Proposed Third Floor Level**

Apartment no 7

Internal area 122 sq.m external area = 11.28sq.m

Apartment no 8

Internal area 134sq.m external area = 16q.m



