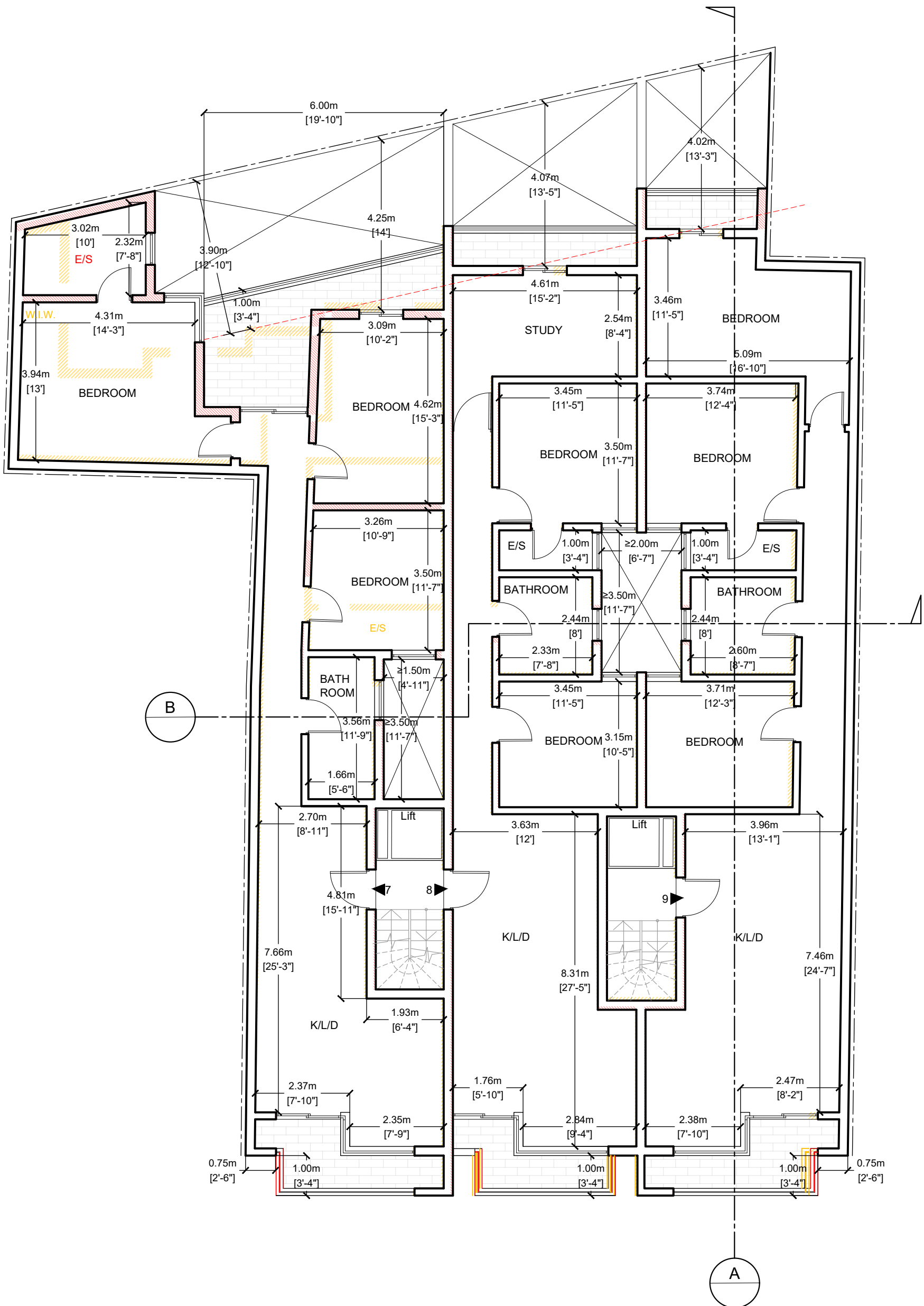


Second Floor Plan  
Approved / Proposed Scale1:100

unit ref.	internal area (m <sup>2</sup> )	external area (m <sup>2</sup> )	total (m <sup>2</sup> )
Apt. 04	115	18.7	133.7
Apt. 05	98	9	107
Apt. 06	111	10	121

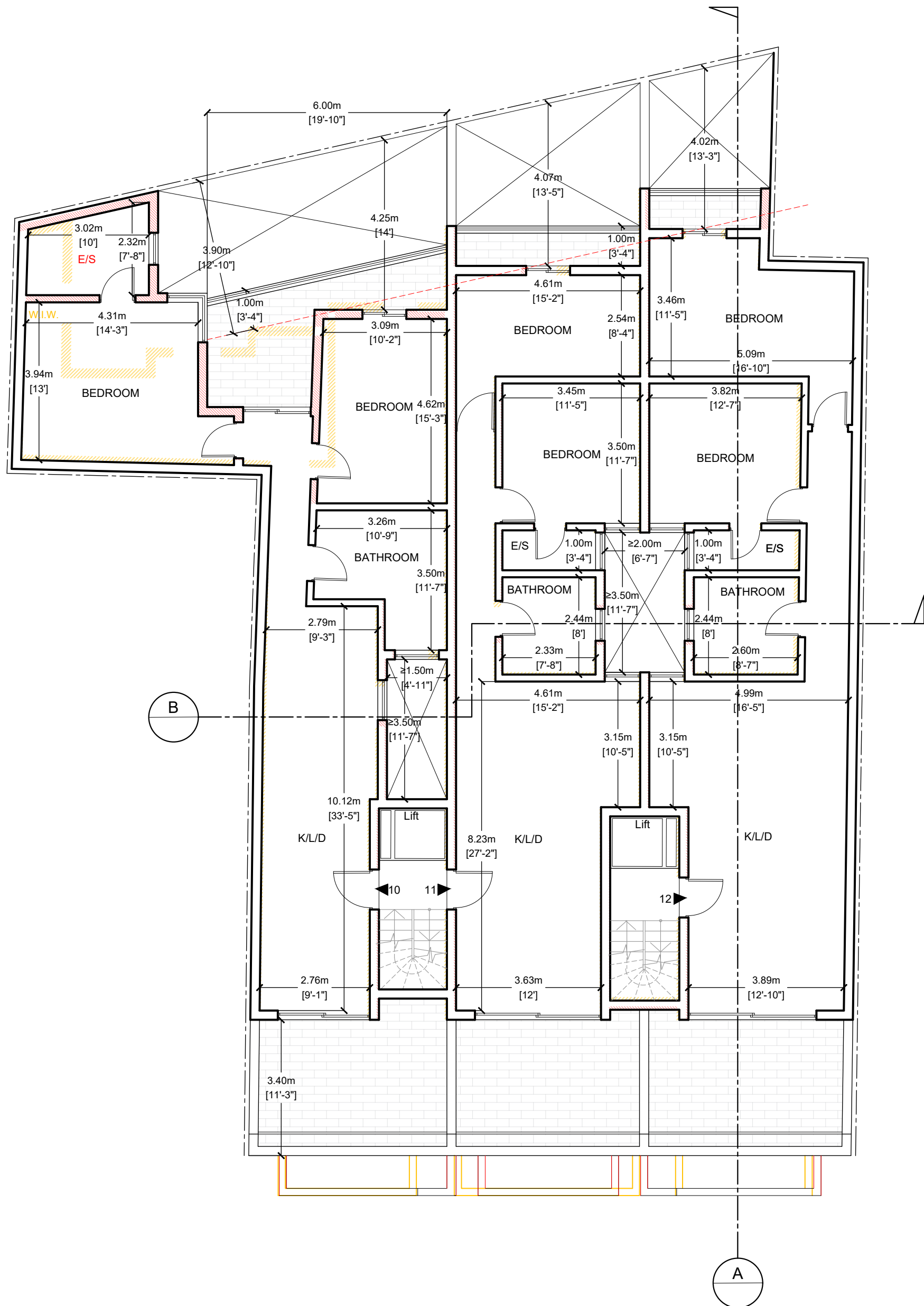
Total development excluding basement and ground floor:  
6 in no. 3-bedroom apts. +  
3 in no. 2-bedroom apts. +  
3 in no. 2-bedroom phouses



Third Floor Plan  
Approved / Proposed Scale1:100

unit ref.	internal area (m <sup>2</sup> )	external area (m <sup>2</sup> )	total (m <sup>2</sup> )
Apt. 07	115	18.7	133.7
Apt. 08	98	9	107
Apt. 09	111	10	121

Total development excluding basement and ground floor:  
6 in no. 3-bedroom apts. +  
3 in no. 2-bedroom apts. +  
3 in no. 2-bedroom phouses



Receded Floor Plan  
Approved / Proposed Scale1:100

unit ref.	internal area (m <sup>2</sup> )	external area (m <sup>2</sup> )	total (m <sup>2</sup> )
Apt. 10	98	30	128
Apt. 11	82	21	103
Apt. 12	95	21	116

Total development excluding basement and ground floor:  
6 in no. 3-bedroom apts. +  
3 in no. 2-bedroom apts. +  
3 in no. 2-bedroom phouses