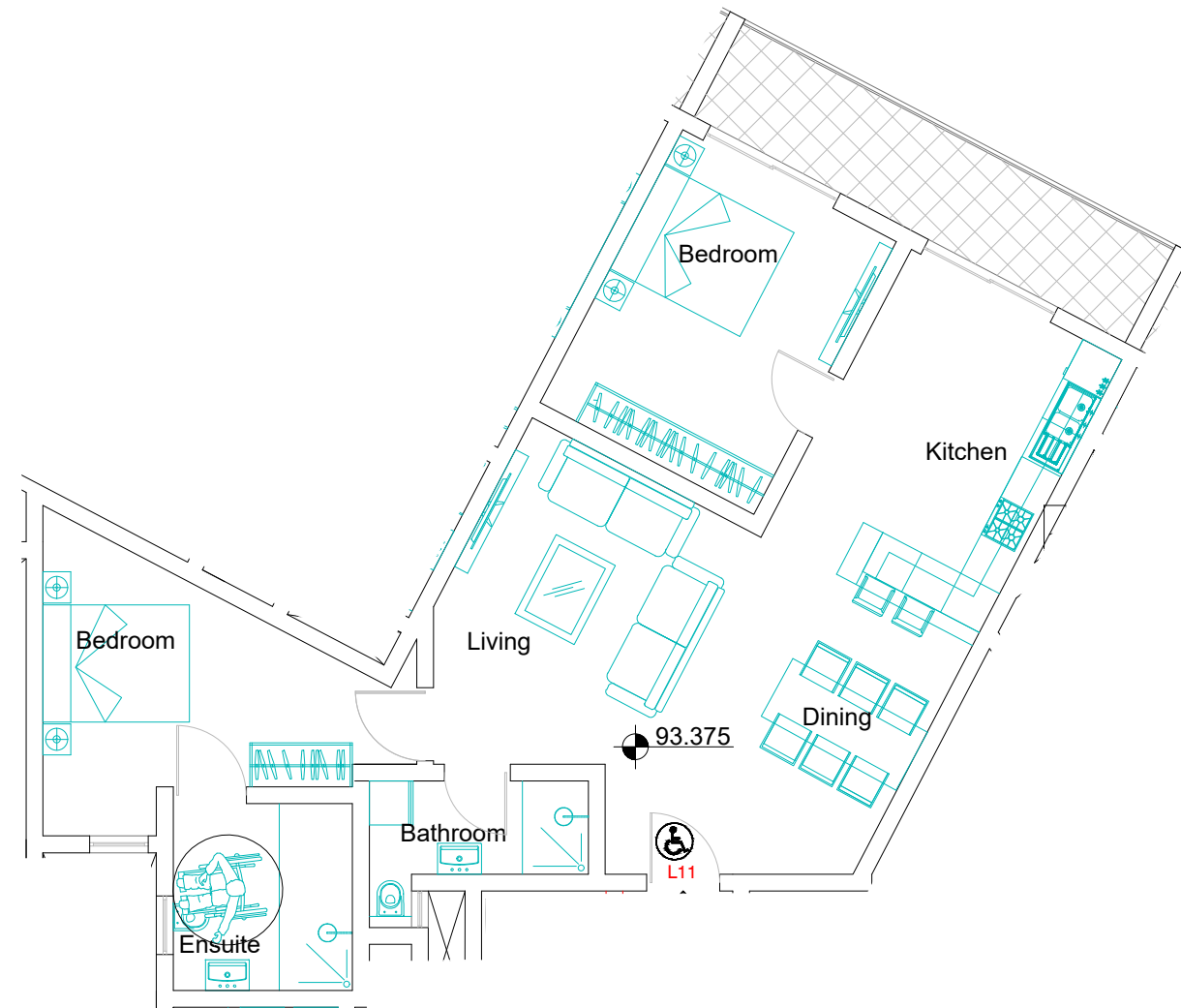
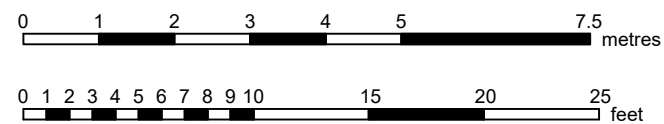


Location Plan



Scale – 1:100



Mosta Development – Triq Tal-Qares

Fourth Floor Level – Apartment L11

- *Gross Internal Area : 93.31m²c.
- *Gross External Area : 9.96m²c.
- *Gross Floor Area : 103.27m²c.
- *As defined in term "gross floor area" in DC2015

info@gap.com.mt
 +356 2327 1000
 GAP Group
 Censu Xerri Street
 Sliema SLM 3060
 Malta
www.gap.com.mt