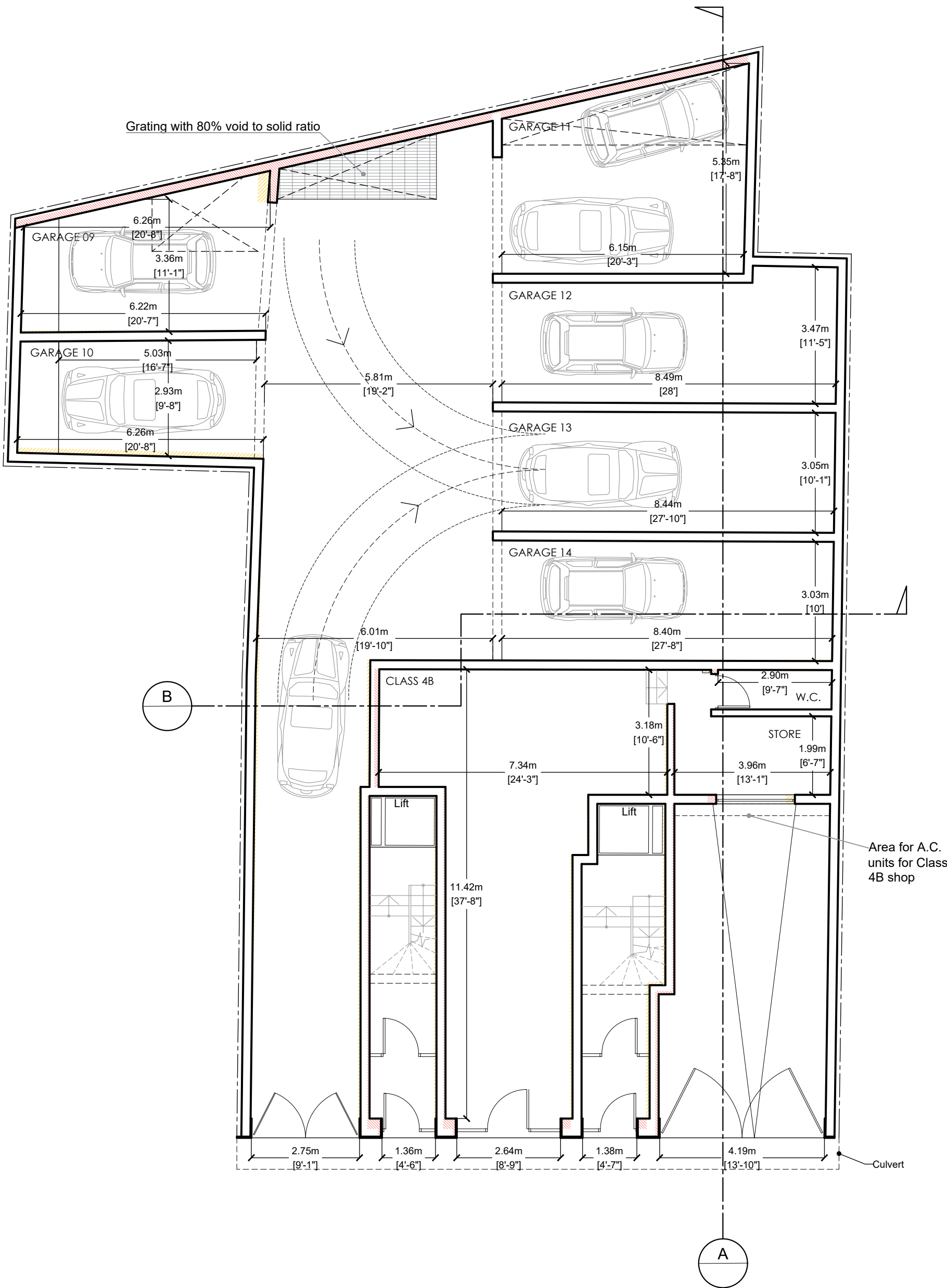


Basement Floor Plan

Approved / Proposed Scale1:100

unit ref.	total (m ²)
Garage 01	33
Garage 02	21
Garage 03	18
Car Park Space 04	13.5
Car Park Space 05	11.5
Car Park Space 06	15.8
Garage 07	36
Garage 08	35

Total development in basement and ground floor level:
10 in no. 1 car garages +
1 in no. 2 car garages +
3 in no. CPS +
1 in no. Class 4B

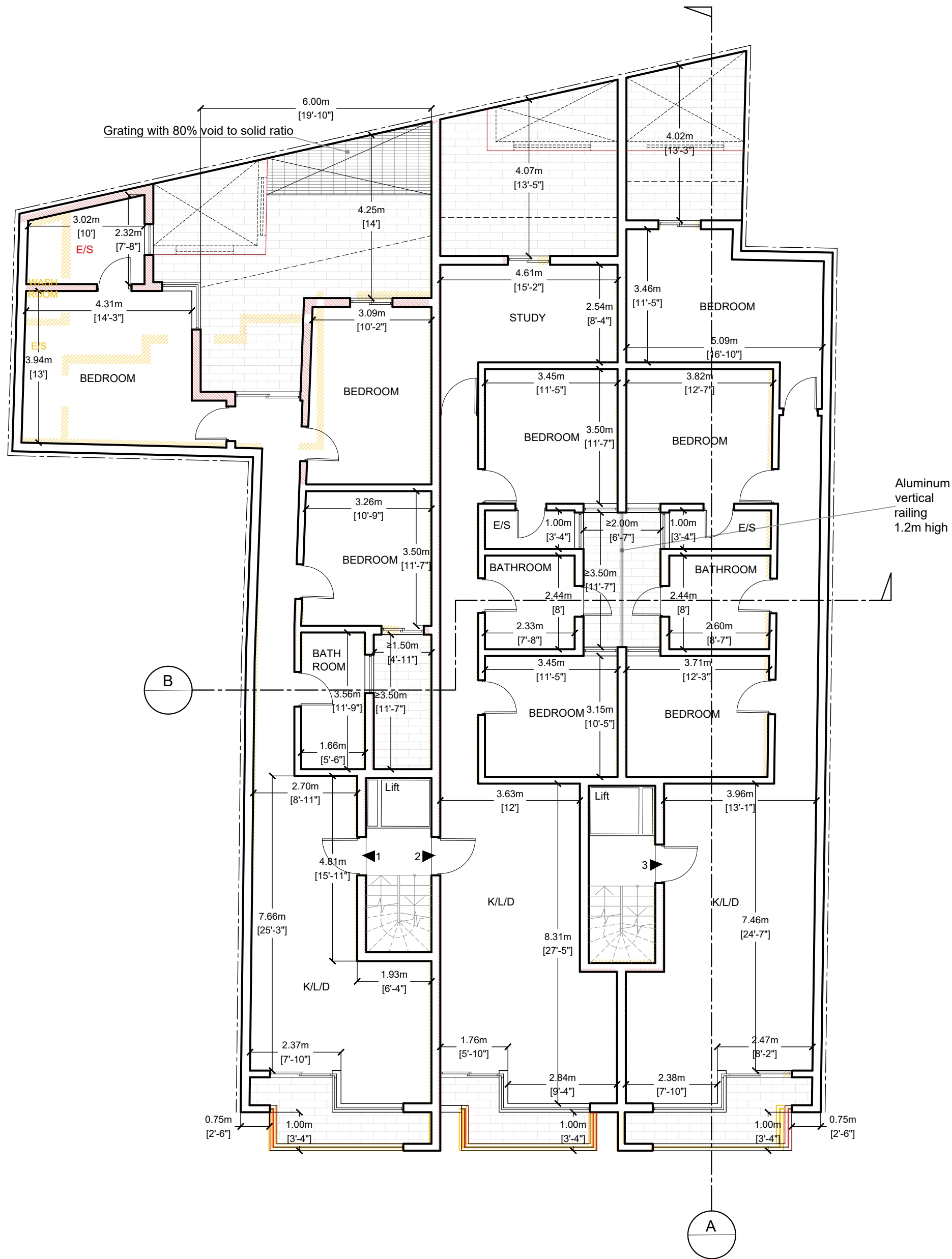


Ground Floor Plan

Approved / Proposed Scale1:100

unit ref.	total (m ²)
Garage 09	23.5
Garage 10	21
Garage 11	33
Garage 12	30
Garage 13	29
Garage 14	29
Class 4B	70

Total development in basement and ground floor level:
10 in no. 1 car garages +
1 in no. 2 car garages +
3 in no. CPS +
1 in no. Class 4B



First Floor Plan

Approved / Proposed Scale1:100

unit ref.	internal area (m ²)	external area (m ²)	total (m ²)
Apt. 01	115	45	160
Apt. 02	98	28	126
Apt. 03	111	24	135

Total development excluding basement and ground floor:
6 in no. 3-bedroom apts. +
3 in no. 2-bedroom apts. +
3 in no. 2-bedroom phouses